



## **Exhibitor Move-In/Out Information: CSC Building Expo**

**February 25<sup>th</sup>, 2026**

Metro Toronto Convention Centre – South Building – 800 Level – Hall G  
222 Bremner Blvd, Toronto, ON M5V 3L9

7am -11am	Move into and set up in Hall G
11am	All exhibitors leave Hall G. Doors will be locked
11am	Paid luncheon (tickets sold separately)
1pm	Exhibitors can re-enter Hall G
1:15pm	Trade show starts
6pm	Trade show ends and tear down can start
6pm-10pm	Move out and service elevators available

### **TABLE DIMENSIONS:**

Please review the table dimensions carefully and ensure your display fits within the allocated space.

#### **Standard tables**

- Table 30" high, 30" deep, 96" long
- Maximum display height is **60"**
- Additional 2' depth is provided for 2 chairs

#### **Premium tables**

- Table 30" high, 30" deep, 96" long
- Maximum display height is **96"**
- Additional 2' depth is provided for 2 chairs
- Electrical power is provided for 120V AC outlets. CSA/ULC approved items

### **MAIN SOUTH BUILDING ENTRANCE (Walk-In – Small Hand Carry Items)**

Ceremonial Entrance

Street level at MTCC South Building is Level 500

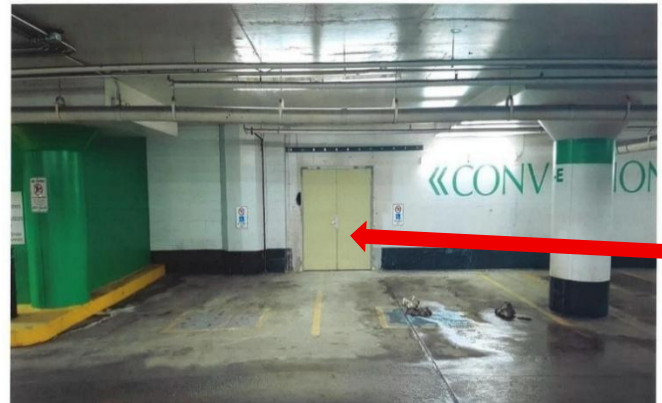
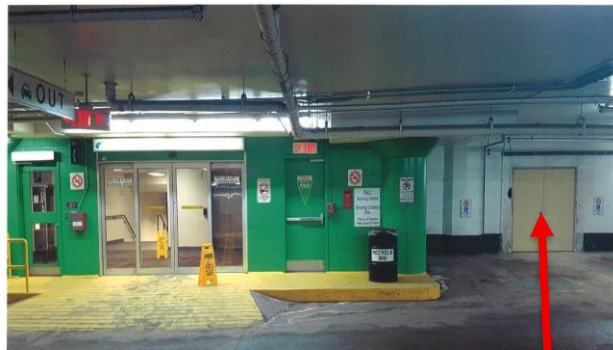
You need to proceed down to Level 800 utilizing 2 different elevators

The Licensor does not permit the movement of freight, equipment, etc. via the main public entrances, the passenger elevators, or escalators

### **SOUTH PARKING GARAGE (Material Transport from South Building Parking Lot)**

Exhibitors who Park in the South Parking Lot when they enter the South Parking Garage can access the SERVICE Elevator (Yellow Doors) located on the North Wall – right beside the entrance to the Main South Building Glass Doors

**Note: The Service Elevator is for exhibitors only and the ONE elevator will be staffed from 7:00am-11:00am for move-in and 6:00pm – 10:00pm for move out**



### **BREMNER SERVICE ELEVATOR (Walk-In Small Hand Carry Items or Material transport from South Building Parking Lot. )**

ONE service elevator accessible from Bremner Boulevard or South Parking Garage.

**These elevators will accommodate standard flatbed dollies only.**

### **VEHICLE OFF-LOADING (Truck Elevator)**

For larger shipments – re vehicle needed - Moving in / out of South Building Hall G will be conducted through the two truck elevators.

The entrance to the truck elevators is located on Lower Simcoe Street, North of Bremner Boulevard.

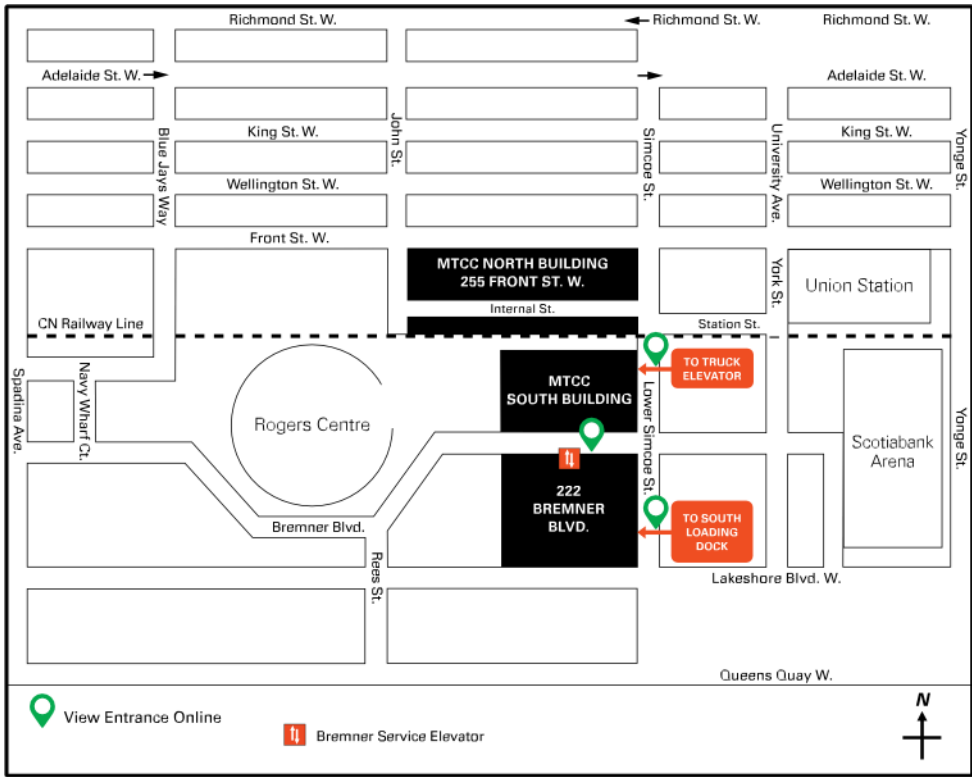
The truck elevators can accommodate straight trucks, cube vans and 5-ton vehicles.

The maximum length is 38 feet, height is 13'6", width 10' and the load capacity of 27,500 kg or 30 tons.

**NOTE: The off-loading area is NOT at dock level.**

Vendors are responsible for providing their own dollies, etc. to transport their items from the Truck Elevator to their respective booth locations.

SOUTH Building Loading



## **BUILDING EXPO TABLE AND DISPLAY SPECIFICATIONS**

**STANDARD TABLES:** Each table will be provided with two chairs. Alteration of the setup and layout of the tables and chairs is not permitted. Aisle tables are 30" high by 30" wide by 96" long. Displays are restricted to a maximum height of 60" from the finish floor that is provided. Displays higher than 60" will not be permitted.

Tradeshow representatives reserve the right to measure at any time. Should your display be over 60" you will be requested to truncate it to the allowable height. If your display cannot be truncated, you will be told to remove it, in its entirety. White table cloths will be provided on all aisle tables. You are not permitted to remove the table cloth. You are permitted to add your own table cloth on top. Electrical service is not provided nor permitted for aisle table exhibitors.

**PREMIUM TABLES:** Each wall table will be provided with two chairs and electrical power. Electrical power is provided for low voltage, CSA/ULC approved items. Samples and demo items not CSA/ULC certified require special permits from the convention centre which must be completed in advance of the show date. Wall tables are 30" high by 30" wide by 96" long. Displays are restricted to a maximum height of 96" from the finish floor that is provided and 96" long, spanning the length of the table. Exhibitors who have purchased more than one table are permitted to have displays that span the full length of the number of tables purchased.

Tradeshow representatives reserve the right to measure at any time. Should your display be over 96" you will be requested to truncate it to the allowable height. If your display cannot be truncated, you will be told to remove it, in its entirety. Display can project a maximum of 30" from the face of the back-drop curtain. Total floor space is restricted to a maximum distance of 4'-6" from the face of the back-drop curtain. Exhibitors with a pre-manufactured display that exceeds 4'-6" (combined with table and exhibitors standing or sitting space) will be required to remove the display. White table cloths will be provided on all aisle tables. You are not permitted to remove the table cloth. You are permitted to add your own table cloth on top.