



Dear Exhibitors,

Thank you again for your support and participation at this year's 45<sup>th</sup> Annual CSC Building Expo. Please find below information regarding Move-in and Move-out details. Exhibitors can begin **set-up on the morning Feb 1 as early as 6am. Move-out commences at the conclusion of the Trade Show at 6 pm.**

The Building Expo **Trade Show opens at 1 pm** and all exhibitors must be set up prior to opening. Please note that there are 3 Seminar Speaker Sessions (each 1 hour in duration) scheduled during the Trade Show with the first starting at 1:30 pm, followed by the second at 2:45 pm and the final at 4 pm.

Please refer to this link: [How to Get Here - Metro Toronto Convention Centre \(mtccc.com\)](https://mtccc.com) for directions to Parking (REFER TO SOUTH BUILDING PARKING)

---

**Exhibitor Move-In/Out Information: CSC Building Expo - February 28, 2024**  
Metro Toronto Convention Centre – South Building – 800 Level – Hall G  
222 Bremner Blvd, Toronto, ON M5V 3L9

**MAIN SOUTH BUILDING ENTRANCE (WALK-IN – SMALL HAND CARRY ITEMS)**

Ceremonial Entrance

Street level at MTCC South Building is Level 500

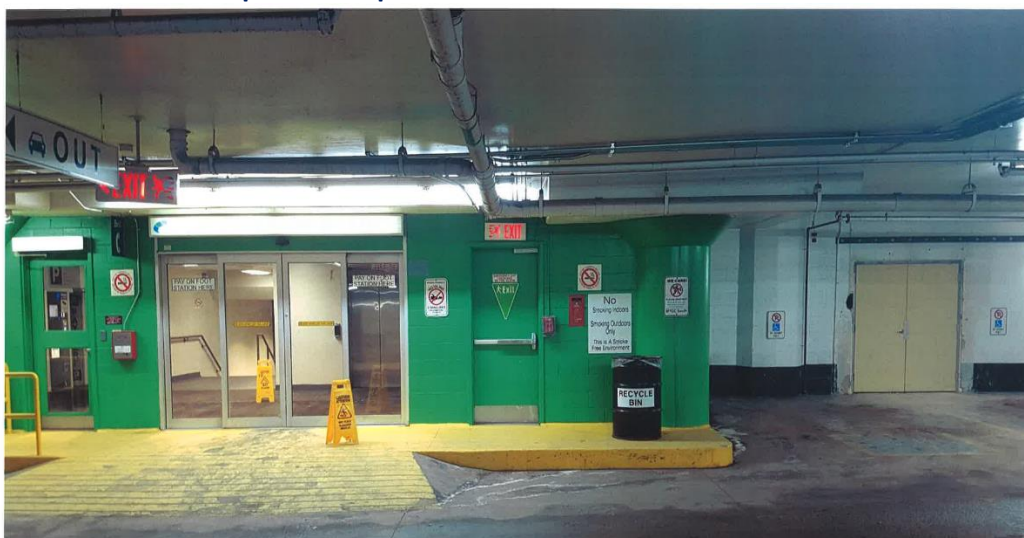
You need to proceed down to Level 800 utilizing 2 different elevators

The Licensor does not permit the movement of freight, equipment, etc. via the main public entrances, the passenger elevators, or escalators

**SOUTH PARKING GARAGE (MATERIAL TRANSPORT FROM SOUTH BUILDING PARKING LOT)**

Exhibitors who Park in the South Parking Lot when they enter the South Parking Garage can access the SERVICE Elevator (Yellow Doors) located on the North Wall – right beside the entrance to the Main South Building Glass Doors

**Note: The Service Elevator is for exhibitors only and the ONE elevator will be staffed from 7:00am-11:00am for move-in and 6:00pm – 10:00pm for move out**





**BREMNER SERVICE ELEVATOR (WALK-IN SMALL HAND CARRY ITEMS OR MATERIAL TRANSPORT FROM SOUTH BUILDING PARKING LOT)**

ONE service elevator accessible from Bremner Boulevard or South Parking Garage.

**These elevators will accommodate standard flatbed dollies only.**

**VEHICLE OFF-LOADING (TRUCK ELEVATOR)**

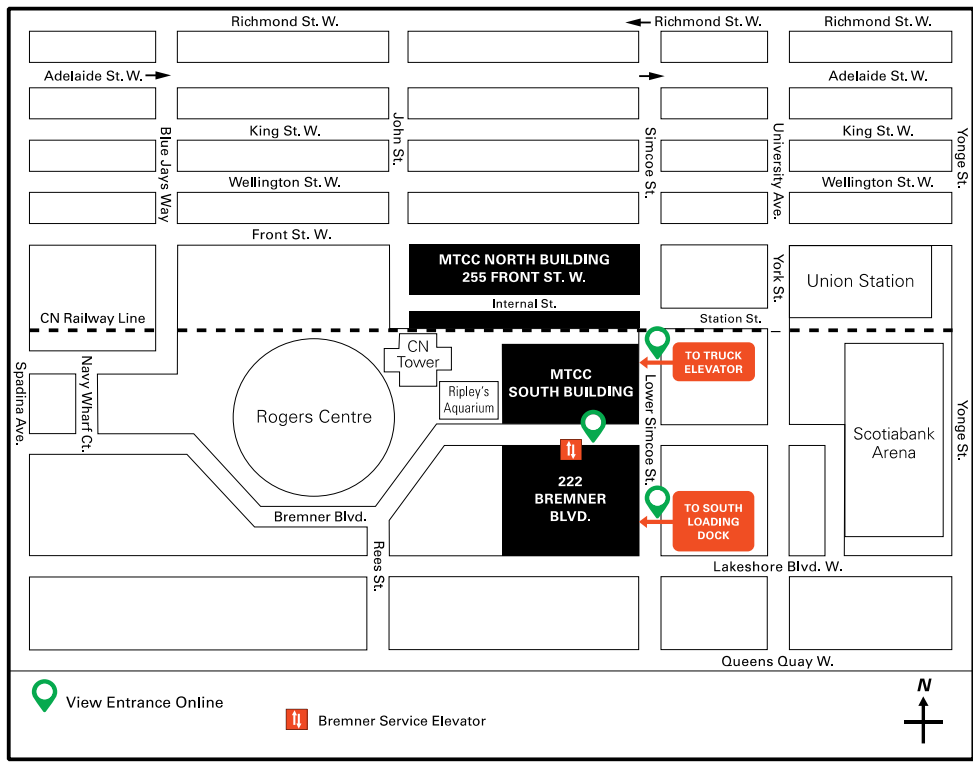
For larger shipments – re vehicle needed - Moving in / out of South Building Hall G will be conducted through the two truck elevators. The entrance to the truck elevators is located on Lower Simcoe Street, North of Bremner Boulevard. The truck elevators can accommodate straight trucks, cube vans and 5 ton vehicles. The maximum length is 38 feet, height is 13'6", width 10' and the load capacity of 27,500 kg or 30 tons.

**NOTE: The off-loading area is NOT at dock level.**

Vendors are responsible for providing their own dollies etc. to transport their items from the Truck Elevator to their respective booth location



# SOUTH Building Loading Docks Map



Map is not to scale | 02/23

